



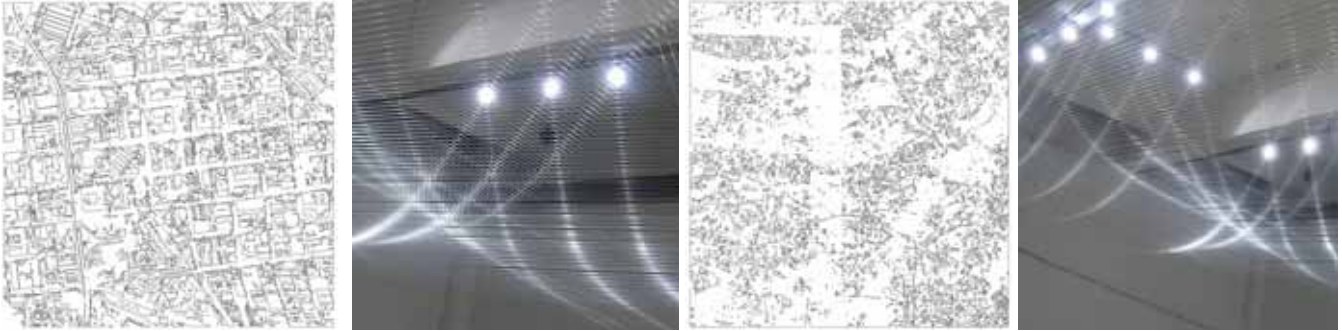
Creatively responding to the experience of the landscape through large scale drawings, using techniques for cordoning off sites of excavation through sticks and string, the artists translate a Google Earth Trace image into a landscape intervention. (The Google Earth trace image is a vectorized linear translation of a Google Earth image into a line drawing.)

The drawing materials and techniques that were used, evoked excavation site grids and geological dig demarcations. Using wooden poles and white ribbon, the artists raised the “drawing” off the ground at different heights. The intention to weave the drawing through the Nirox landscape allowed the visitors to navigate through and around the installation, encouraging them to further explore the space.

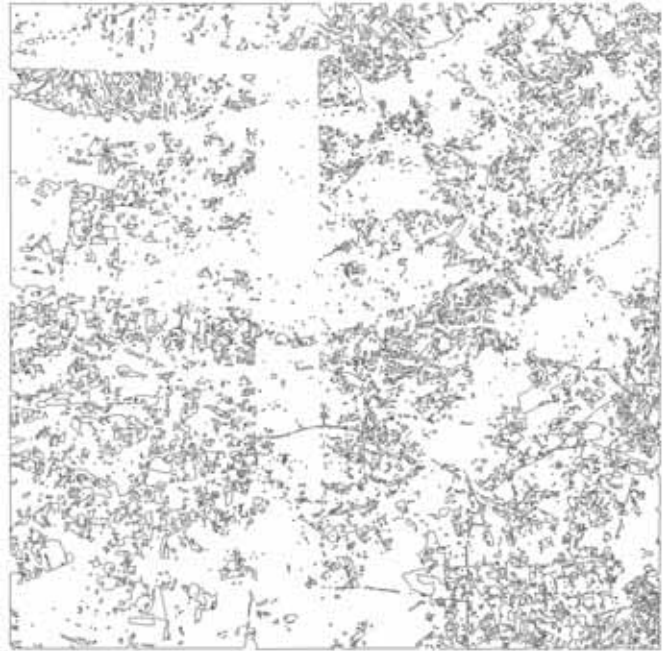
While the artists started the installation process in the morning of the event, the “growth” of the drawing continued through the day and becomes both performative and participatory.

As part of the artwork intervention a series of 4 images were exhibited in close proximity to the installation. This set of artworks by both artists referencing the original Google earth trace artworks as well as documentation of previous installation work.

The project was realized for an event of Visi Magazine and Arts on Main (Johannesburg) at the Nirox Foundation (Cradle of Humankind).



Art on Main Google Earth Trace



Cradle Google Earth Trace

Google earth image of areas surrounding Art on Main and Nirox Foundation:









TRACES

A project by Bronwyn Lace and Marcus Neustetter









TRACES

A project by Bronwyn Lace and Marcus Neustetter

